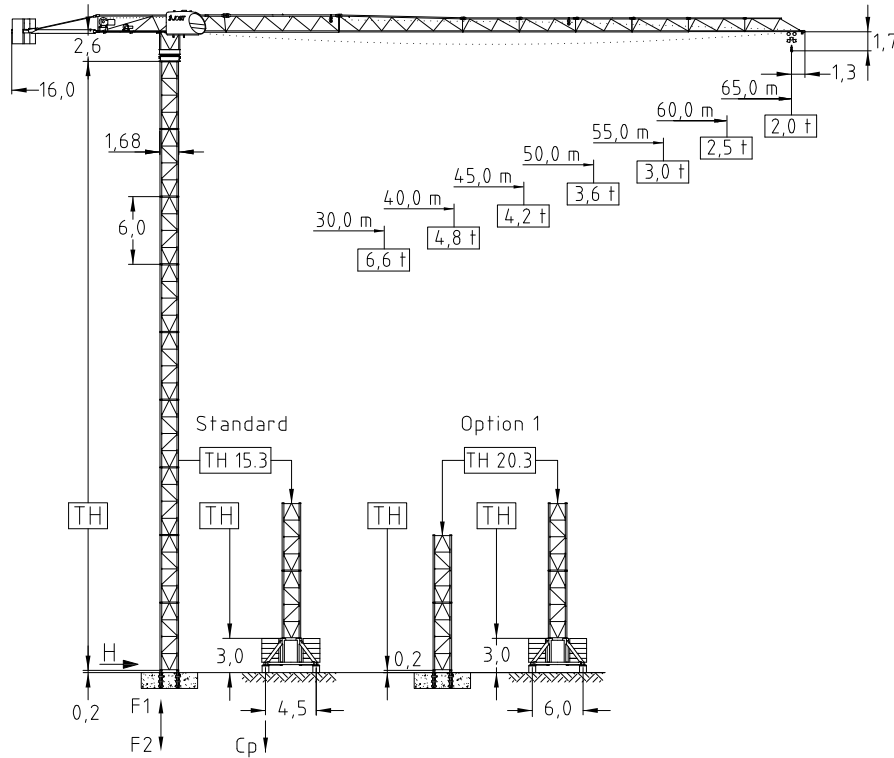


JT 182.8 - 8,0 ton

Tower TH 15.3 4-fall rope

Topless Crane



Jib (m)	Tower heights all data in (m)			
	Standard Tower		Option 1	
	Foundat.	Chassis	Foundat.	Chassis
30,0-40,0-45,0	TH 15.3	UC 4,5-15.3	TH 20.3	UC 6,0-20.3
50,0-55,0-60,0-65,0	63,0	51,0	63,0	60,0
	60,0	48,0	60,0	57,0

EN 14439 : 2008
WIND C 25
ISO 9001 : 2008



Radius & Capacity													
Jib		max. Load		Jib reach									
m	rope	t	m	25	28	30	35	40	45	50	55	60	65
65,0	⊗	4,0	36,6	4,00	4,00	4,00	4,00	3,60	3,14	2,77	2,46	2,21	2,00
	⊗	8,0	19,3	5,93	5,20	4,79	3,99	3,39	2,93	2,56	2,26	2,01	1,80
60,0	⊗	4,0	40,2	4,00	4,00	4,00	4,00	4,00	3,51	3,10	2,77	2,50	
	⊗	8,0	21,7	6,80	5,98	5,52	4,62	3,95	3,43	3,02	2,68	2,40	
55,0	⊗	4,0	42,9	4,00	4,00	4,00	4,00	4,00	3,78	3,35	3,00		
	⊗	8,0	22,9	7,23	6,36	5,88	4,94	4,23	3,69	3,25	2,90		
50,0	⊗	4,0	45,6	4,00	4,00	4,00	4,00	4,00	4,00	3,60			
	⊗	8,0	24,3	7,73	6,81	6,30	5,29	4,54	3,96	3,50			
45,0	⊗	4,0	45,0	4,00	4,00	4,00	4,00	4,00	4,00				
	⊗	8,0	25,4	8,00	7,20	6,66	5,60	4,81	4,20				
40,0	⊗	4,0	40,0	4,00	4,00	4,00	4,00	4,00	4,00				
	⊗	8,0	25,4	8,00	7,18	6,65	5,59	4,80					
30,0	⊗	4,0	30,0	4,00	4,00	4,00							
	⊗	8,0	25,4	8,00	7,13	6,60							

Hoist 22,0 kW FI							
⊗	t	1,2	1,8	2,8	4,0	4,0	4,0
	m/min	62	52	42	32	26	16
⊗	t	2,4	3,6	5,6	8,0	8,0	8,0
	m/min	31	26	21	16	13	8
Drum capacity				320,0 m			

Hoist 30,0 kW FI							
⊗	t	1,0	1,4	2,2	3,5	4,0	4,0
	m/min	90	82	66	50	42	24
⊗	t	2,0	2,8	4,4	7,0	8,0	8,0
	m/min	45	41	33	25	21	12
Drum capacity				700,0 m			

Power requirement
400V (±10%) - 50Hz

Motor	3,0 kW FI	2 x 5,0 kW	2 x 5,0 kW
t/v	0,0-80,0 m/min	0,77 rpm	25,0 m/min
Power requirement		Hoist 22,0 kW	48,0 kVA
Upper part		Hoist 30,0 kW	60,0 kVA

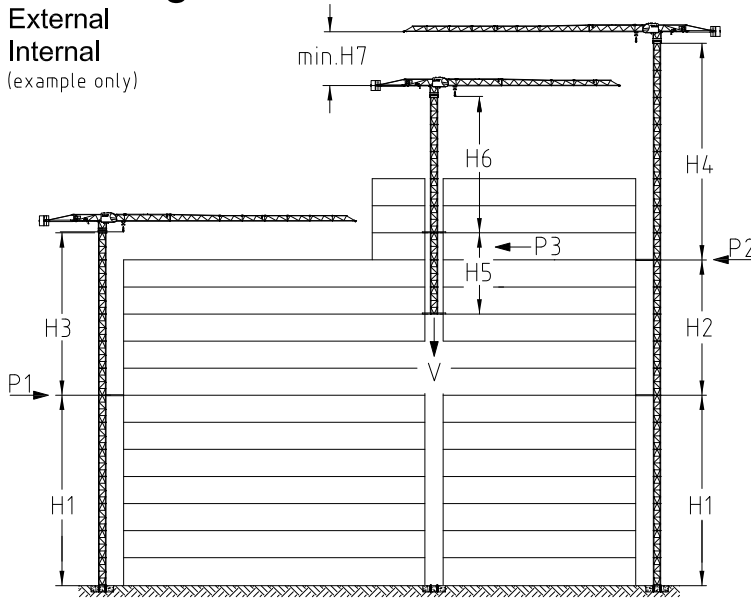
Shipping		
	Truck	Cont.
Top crane	5	6
Tower	2 unit	1
Climbing	1	1
Chasis	1	1

Counter weight	
Block 1	6 x 2,8 t
Block 2	1 x 1,8 t
Total	16,8 t

Ropes		
	D (mm)	N/mm ²
Hoist	12,0	1960
Trolley	8,0	1770

Climbing

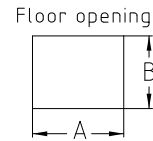
External
Internal
(example only)



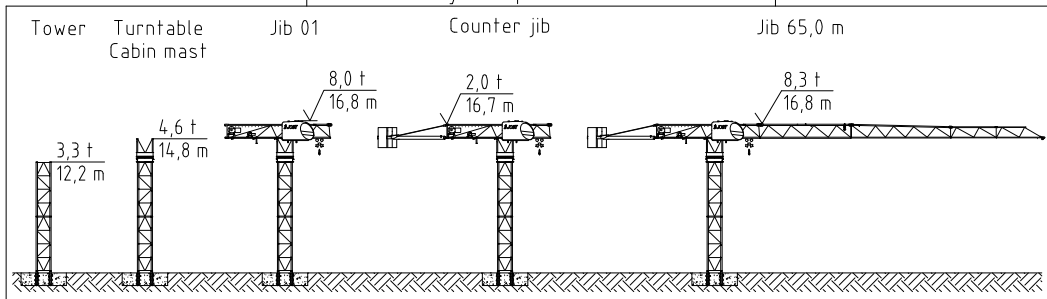
	m	in service	out of service
		t	t
H1	54,0		
H2	52,0		
H3	48,0		
H4	48,0		
H5	14,0		
H6	27,0		
H7	6,0		
A	2,40		
B	1,90		
P1		95,5	258,3
P2		100,7	228,9
P3		186,1	226,6
V		677,5	577,1

All data with TH 15.3

Jib length 30,0 m



Assembly sequence TH 15.3



Crane on foundation plate

Jib length (m)	Tower height (m)	No. of Towers	Foundation loadings			Corner forces	
			M (kNm)	V (kN)	H (kN)	F1 (kN)	F2 (kN)
65-60-55-50	60,0	10,0	6222,0	756,0	147,3	2315,0	- 2693,0
45-40-30	63,0	10,5	6517,0	717,7	149,1	2392,0	- 2750,0

Crane on chassis

Jib length (m)	Tower height incl. chassis (m)	No. of Towers	in service		out of service		Ballast (t)
			Cp (kN)	H (kN)	Cp (kN)	H (kN)	
65-60-55-50	51,0	8,0	957,0	37,0	1099,0	152,7	115,0
45-40-30	54,0	8,5	1015,0	37,4	1121,0	154,9	130,0

Part list

Part	L (m)	W (m)	H (m)	kg	Part	L (m)	W (m)	H (m)	kg
Jib 12	11,82	2,45	2,30	4450	Counter jib 02	9,97	2,01	1,55	1970
Jib 13	10,32	1,10	1,90	2200	Hook block	0,82	0,42	0,96	342
Jib 11	5,35	1,10	1,65	1665	Hoist unit & rope	1,66	1,54	0,88	1300
Jib 02	10,30	1,10	1,64	1600	Trolley unit & rope	1,10	0,87	0,56	280
Jib 03	11,25	1,10	1,58	1310	Trolley	1,40	1,40	0,93	250
Jib 04	5,22	1,10	1,31	545	Turn table+slew.unit	2,27	1,90	2,57	4580
Jib 05	5,18	1,10	1,30	450	Cabin & controlhous.	3,50	2,20	1,10	1350
Jib 06	5,17	1,10	1,30	360	Jib end	0,53	1,22	0,95	70
Jib 07	5,15	1,10	1,30	290					
Jib 09	5,12	1,10	1,27	200					